



RETAIL/OFFICE SPACE

**AVAILABLE
FOR LEASE**

\$26/SF NNN



LOCATION: 168 Easton Rd, Horsham, PA 19044

PROPERTY HIGHLIGHTS:

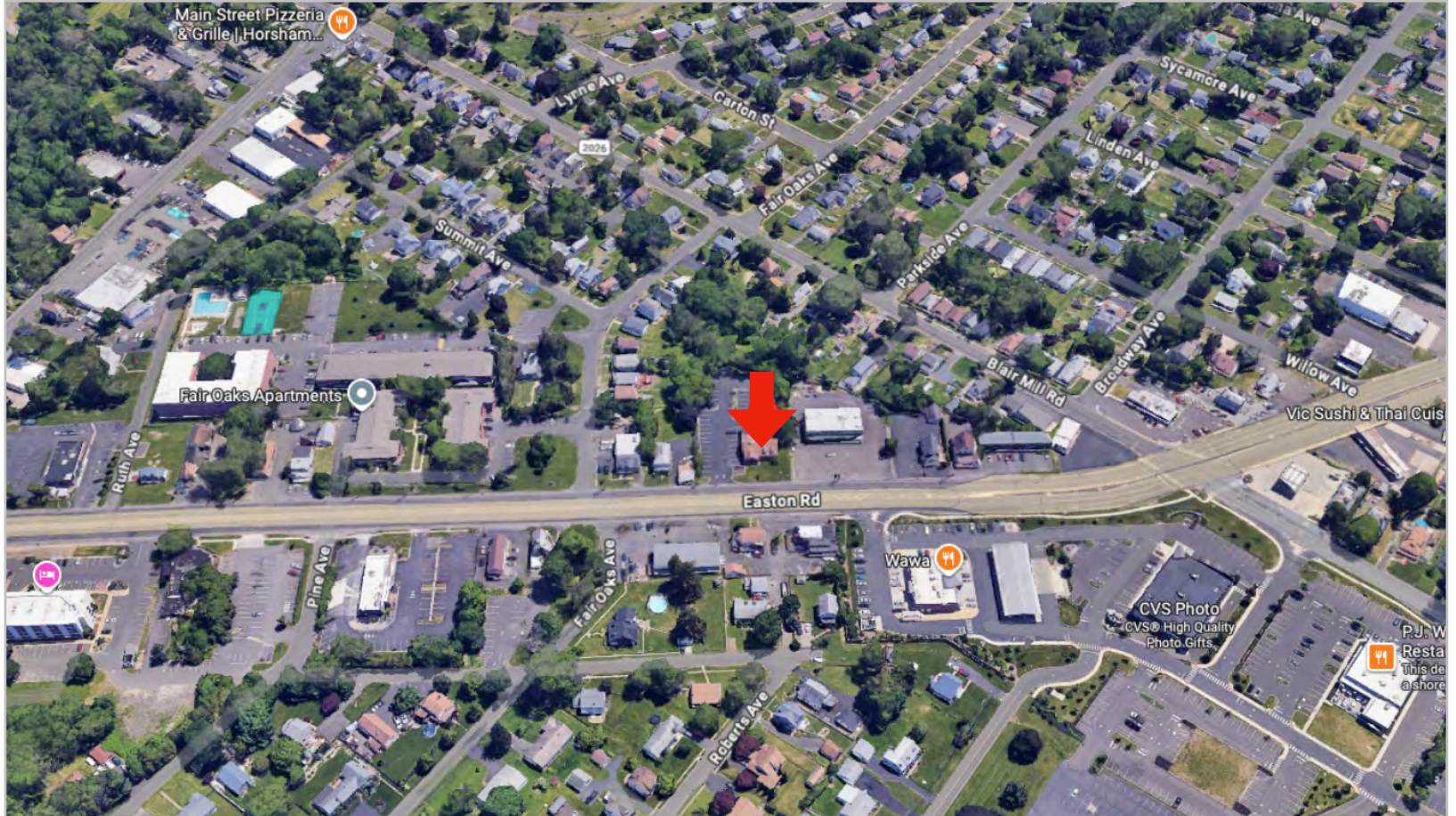
- ◆ Former Friendly's Converted Into Retail/Office Space
- ◆ 3,410 SQFT Bldg; Divisible into 2 Units:
Unit 1: +/- 1,700SF; Unit 2: +/-1,500SF
- ◆ Zoned CG2
- ◆ 52 Parking Spaces
- ◆ Just a short distance to the PA Turnpike (I-276)!
- ◆ ADT Easton Rd (Rt 611): +/-26,432
- ◆ 2 Mile Demographics: Population:+/- 44,393;
Average Household Income: +/- \$120,638
- ◆ Google Map Location: [168 Easton Rd](#)

Robert Reynolds
Cell: 609-635-2003
Office: 610-359-9700
reynolds@capitalcomre.com

The information above has been obtained from sources believed reliable. While we do not doubt its accuracy, we have not verified it and make no guarantee, warranty, or representation about it. It is Buyer/Lessee responsibility to independently confirm its accuracy and completeness. This is not intended to solicit another Broker's listing.

FOR LEASE

\$26/SF NNN



Robert Reynolds
Cell: 609-635-2003
Office: 610-359-9700
rreynolds@capitalcomre.com